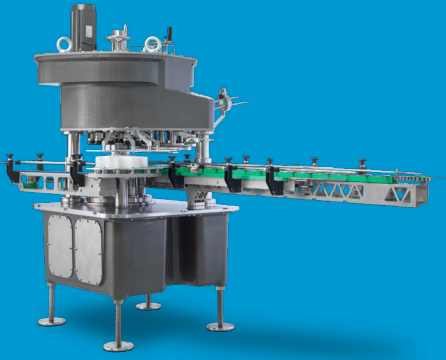


ferrum



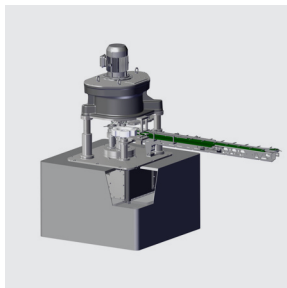
ferruCompact
EFFICIENT. COMPACT. RELIABLE.



ferruCompact

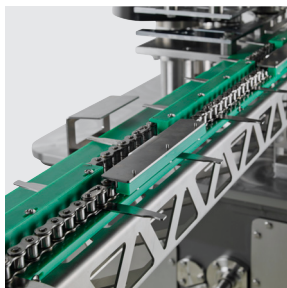
COMPACT, BUT POWERFUL

The ferruCompact line is the perfect solution for small and medium-sized breweries as well as beverage bottlers. It enables the reliable sealing of aluminum and steel cans filled with beer, alcoholic mixed drinks, or soft drinks. Efficient, compact, and versatile – ideal for professional filling operations.



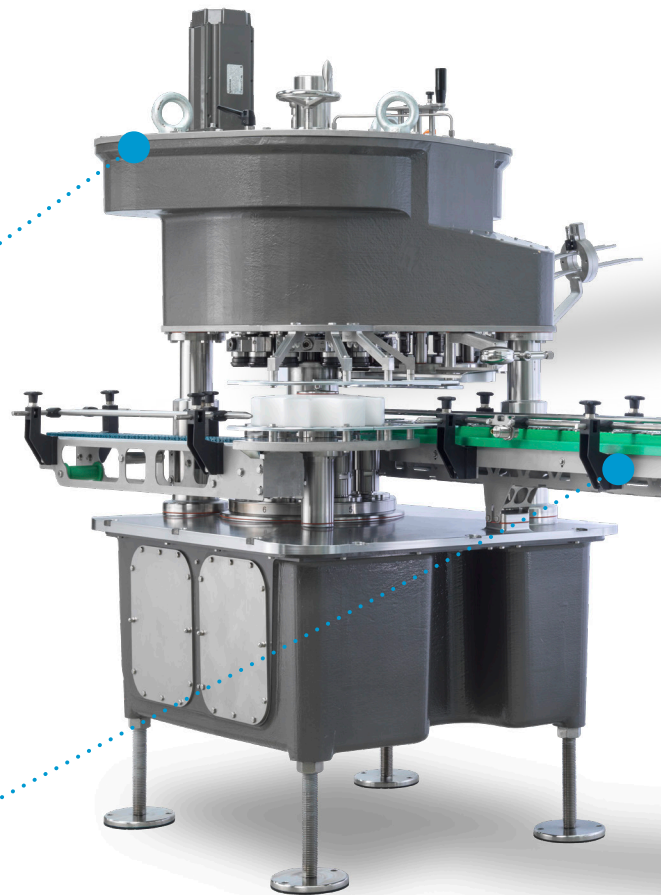
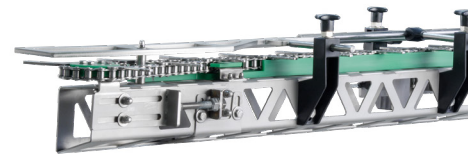
FLEXIBLE INTEGRATION

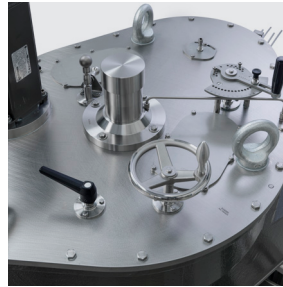
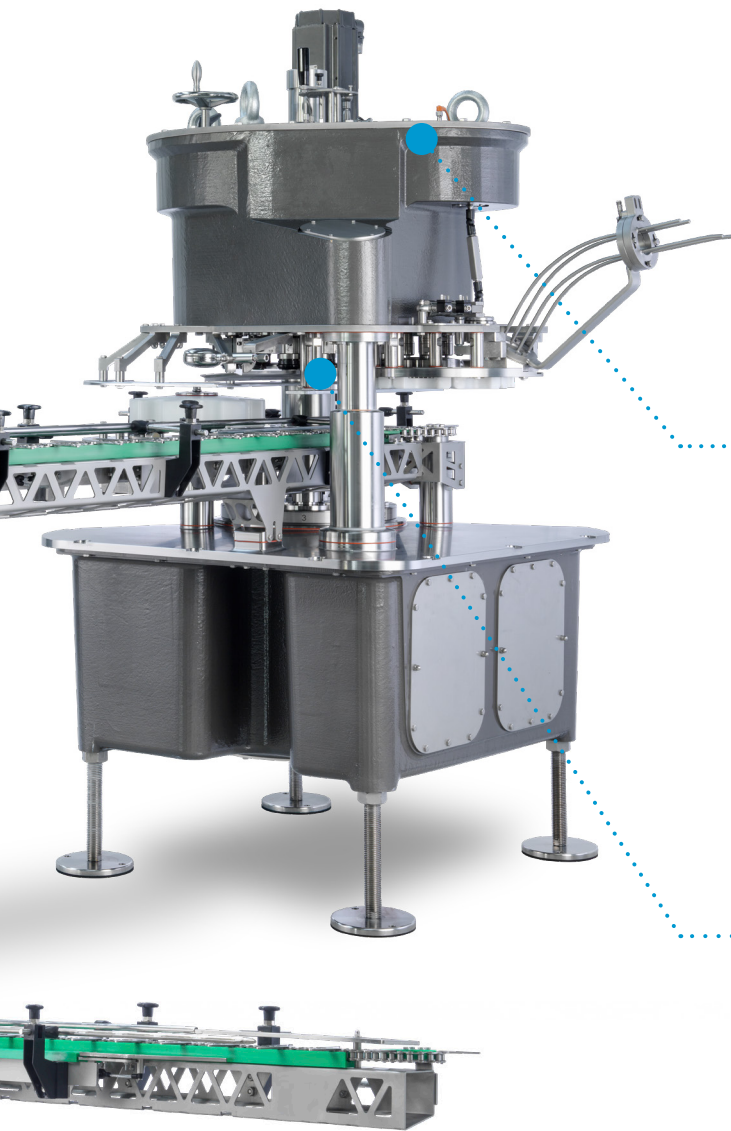
The synchronization between filler and seamer is done mechanically or electrically servo-driven. The connection to the filler is integrated into a filler-monobloc (image above) or with machine feet next to the filler (image below).



INFEED TABLE

The transfer chain is equipped with a safety clutch. The horizontal chain guide provides an extremely compact and hygienic design.





DISENGAGEABLE / QUICK-SET SEAMING CAM

The disengageable 2nd OP allows easy and quick adjustment of the 1st OP without removing the 2nd OP roll. Furthermore the quick-set seaming cam also enables change-over between different can material thicknesses. The fine tuning allows a high precision setting for any seam thickness.



QUICK CHANGEOVER TOOLS

The can seamers are equipped with quick changeover tools which reduce format changeover times significantly. The additional laser markings on the parts for each format, makes the changeover simpler and safer. After a systematic weight reduction, the weight of each change part is now limited to a maximum of 13 kg.

PERFORMANCE

FC03 | up to 21'300 cans/hour

FC06 | up to 45'000 cans/hour

FC08 | up to 60'000 cans/hour

FEATURES

ADDED VALUE FOR YOUR PRODUCTION LINE

Our intelligent features provide you with greater safety, efficiency, and hygiene in production. With automated systems, fast cleaning processes, and thoughtful safety solutions, you can optimize your workflows and reduce downtime. This way, you benefit from maximum performance and minimal maintenance effort.



AUTOMATIC HEIGHT ADJUSTMENT

This option allows automatic height setting. The controls are part of the customer HMI-menu. This allows an automatic setting to the desired height.



AUTOMATIC OPEN PLANT CLEANING (OPC)

The can seamer must be regularly cleaned to meet hygienic requirements. With the OPC system, all components in contact with cans in the seaming area, at the can out-feed, at the gassing rotor and optionally, at the infeed table are cleaned with a foam cleaning system.



FLUSHING DEVICE

Heavy contamination such as beer foam or sugar residues may be dissolved and rinsed away from the seaming and lifting elements by the flushing function. The flushing process is carried out at short intervals whereas the cleaning time is kept below one minute.

TECHNICAL DATA





HYGIENIC DESIGN

The ferruCompact line was designed to meet higher hygienical requirements. The inclined base plate and hygienically optimized designed change parts allow maximum drainage of liquids. The so improved surfaces prevent standing water on the change parts.

All parts in the seaming area are in stainless finish which may be clea-

ned with high efficient cleaning agents. With the inclined base plate, open machine design, exterior O-rings and angled surfaces, Ferrum is setting new standards in terms of hygiene.

APPLICATIONS FERRUCOMPACT

BEER / CRAFT BEER

SOFTDRINKS

JUICES & ICE TEA

YOUR BENEFITS AT A GLANCE

OUR EXPERIENCE MAKES THE DIFFERENCE

Ferrum brings over 100 years of experience to seaming technology. With the ferruCompact series, you ensure efficiency, hygiene, fast format changeovers and reliable support - for minimum downtime and maximum performance.

CHALLENGE

HYGIENIC



- + Production loss due to frequent cleaning
- + Meeting specific hygiene requirements
- + Costs for cleaning agents, water, etc.

USER-FRIENDLY



- + Format changes mean machine downtime
- + Adjustments are very time-consuming and require extensive machine knowledge from the operator

EFFICIENT AND RELIABLE



- + Sealing process is not reproducible, leading to reduced quality
- + Unplanned downtime and production loss

CUSTOMER-ORIENTED



- + Unplanned machine downtime leads to costly, long waiting times
- + No timely support available
- + Seaming solution needs to be adapted due to new requirements

SOLUTION

- + Completely rust-free product area
- + Hygienic design: Improved surface quality and easier drainage of liquids

- + Quick changeover is standard
- + Ferrum offers customized training to ensure maximum efficiency

- + Seaming rolls of exceptional Ferrum quality, thanks to outstanding seaming know-how and our own seaming laboratory
- + Robust machines perfectly designed for can seaming
- + Customized solutions tailored to various customer needs

- + Global network of branches with a 24-hour hotline
- + Local Ferrum technician on-site in no time to provide support

BENEFIT

- + Extended cleaning intervals and reduced cleaning time
- + Increased process reliability and production efficiency

- + Shorter changeover and thus downtime during format changes
- + Intuitive and easy operation

- + Unmatched process reliability thanks to over 100 years of experience with can seamers
- + Best support even with the most complex seaming challenges

- + Drastic reduction in downtime
- + Competent experts from your region provide timely support

FERRUM PACKAGING LTD.

GLOBAL SUPPORT, WHEREVER YOU ARE



SCAN TO FIND YOUR
NEAREST FERRUM
SUBSIDIARY OR SALES &
SERVICE LOCATION



LEARN MORE ABOUT
FERRUM CAN SEAMERS



GET IN CONTACT WITH OUR
CAN SEAMER EXPERTS



STAY UP TO DATE
FOLLOW FERRUM PACKAGING ON
LinkedIn

Ferrum Packaging Ltd. | Industriestrasse 11 | 5503 Schafisheim | Switzerland
Tel. +41 62 889 13 11 | packaging@ferrum.net | ferrum.net