

**ferrum**



**ferruBasic**

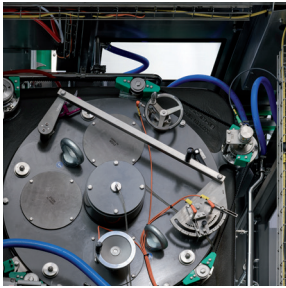
**RELIABLE. ROBUST. HIGH PERFORMANCE.**



# ferruBasic

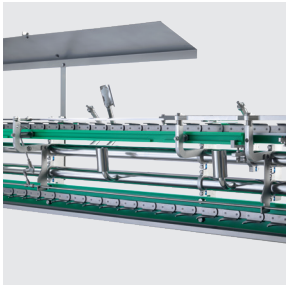
## POWER AT A GLANCE

The ferruBasic ensures efficiency and easy handling with state-of-the-art technology. Thanks to quick format changes, integrated cleaning, and an intuitive control system, time is saved, and downtime is reduced. The hygienic solutions and robust design guarantee reliable performance and long-lasting durability.



### SEAMING CAM

Quickly adaptable for maximum user-friendliness and process reliability. The seaming cam allows for easy quality inspection without the need to remove any parts. It automatically detects the material and adjusts within minutes.



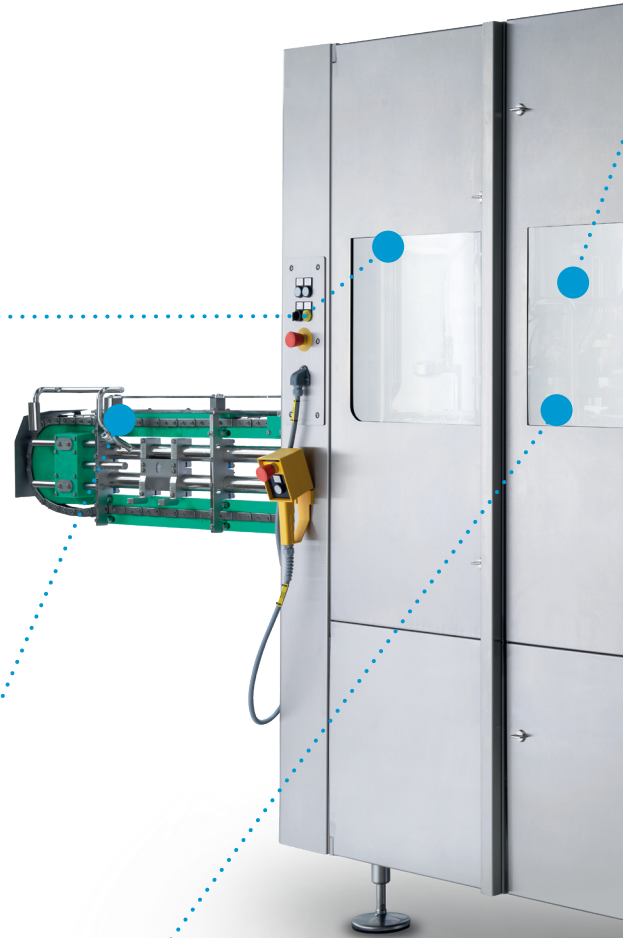
### INFED TABLE

Safe can insertion with maximum hygiene. The robust overload clutch protects the process, while the optional cleaning system meets even the strictest hygiene standards. Perfectly tailored to the WIP cleaning process.



### QUICK CHANGEOVER TOOLS

Quick format changes for maximum efficiency and process reliability. The tools can be swapped out in no time, significantly reducing setup times. Color markings provide additional safety and easy handling.





### WASH-IN-PLACE

Comprehensive cleaning for maximum hygiene and operational safety. The WIP system automatically cleans all can-contacting parts with foam. Even hard-to-reach areas, such as the seaming area and the in-feed table, are effectively cleaned.



### ferruFlow

Efficient control for optimal gas consumption and seamless integration into the machine design. The CO<sub>2</sub>/N<sub>2</sub> gas flow automatically adjusts to the machine speed. All pipelines are designed to be cleaned during the cleaning process.



### UTILITY TOWER

All-in-one housing for easier maintenance and longer lifespan. Control technology, pneumatics, and oil system are compactly integrated and easily operated via the touch panel. The clear separation from the production area simplifies cleaning and protects the supply units.

## PERFORMANCE

**F05** | up to 37'500 cans/hour

**F06** | up to 45'000 cans/hour

**F08** | up to 60'000 cans/hour

**F12-1** | up to 96'000 cans/hour

**F12-2** | up to 105'000 cans/hour

**F18** | up to 150'000 cans/hour

# FEATURES

## ADDED VALUE FOR YOUR PRODUCTION LINE

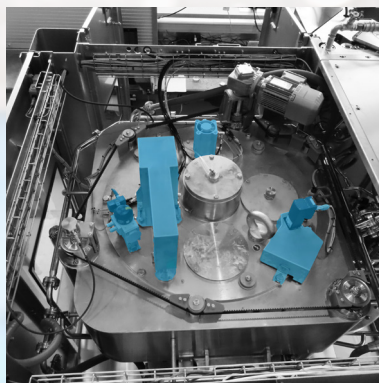
Our intelligent features provide you with greater safety, efficiency, and hygiene in production. With automated systems, fast cleaning processes, and thoughtful safety solutions, you can optimize your workflows and reduce downtime. This way, you benefit from maximum performance and minimal maintenance effort.



### HYGIENE PACKAGES

#### **Maximum hygiene for a clean and safe production:**

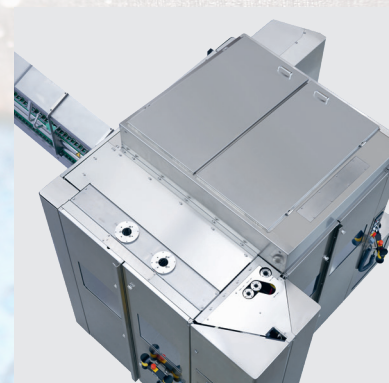
The three hygiene packages offer tiered solutions, from stainless steel surfaces to optimized components with minimal spray shadows. This improves liquid drainage and makes the cleaning process even more effective.



### AUTOMATIC SEAMING CAM

**Time savings and increased safety through fully automatic adjustment:** The seaming cam can be conveniently controlled via the touch panel and stores various settings for material thicknesses and can combinations.

This makes switching between formats simple and efficient.



### SEAMER TOP COVER

**Protection against contamination for safe production:** The seamer cover prevents external particles from entering the product area and can be operated both manually and pneumatically. Optionally, it can be prepared for a fan unit.

### TECHNICAL DATA





### CO<sub>2</sub>-EXHAUST UNIT

---

**Maximum safety for operators through efficient CO<sub>2</sub> reduction:**

The extraction system lowers the CO<sub>2</sub> concentration at the workplace to safe levels while also meeting strict hygiene standards. A stainless steel fan and integrated washing nozzles ensure clean and reliable extraction.



### TWO-HAND CONTROL SYSTEM

---

**Maximum safety during adjustment work with the two-hand operating system, Safeball type:**

It meets the highest safety standards and reliably protects operators. The systems are specifically designed for the requirements of beverage can lines.



### FLUSHING DEVICE

---

**Efficient cleaning in the shortest time for maximum production hygiene:**

The flushing function effortlessly removes beer foam and sugar residues from key components. The cleaning process is completed in less than a minute with short intervals.

## APPLICATIONS FERRUBASIC

BEER / CRAFT BEER

---

SOFTDRINKS

---

JUICES & ICE TEA

---

# YOUR BENEFITS IN ONE VIEW

## OUR EXPERIENCE MAKES THE DIFFERENCE

Ferrum brings over 100 years of experience to seaming technology. With the ferruBasic series, you ensure efficiency, hygiene, fast format changeovers and reliable support - for minimum downtime and maximum performance.

### CHALLENGE

#### HYGIENIC



- + Production loss due to frequent cleaning
- + Meeting specific hygiene requirements
- + Costs for cleaning agents, water, etc.

#### USER-FRIENDLY



- + Format changes mean machine downtime
- + Adjustments are very time-consuming and require extensive machine knowledge from the operator

#### EFFICIENT AND RELIABLE



- + Sealing process is not reproducible, leading to reduced quality
- + Unplanned downtime and production loss

#### CUSTOMER-ORIENTED



- + Unplanned machine downtime leads to costly, long waiting times
- + No timely support available
- + Seaming solution needs to be adapted due to new requirements

## SOLUTION

- + Completely rust-free product area
- + Hygienic design: Improved surface quality and easier drainage of liquids

## BENEFIT

- + Extended cleaning intervals and reduced cleaning time
- + Increased process reliability and production efficiency

- + Quick changeover is standard
- + Ferrum offers customized training to ensure maximum efficiency

- + Shorter changeover and thus downtime during format changes
- + Intuitive and easy operation

- + Seaming rolls of exceptional Ferrum quality, thanks to outstanding seaming know-how and our own seaming laboratory
- + Robust machines perfectly designed for can seaming
- + Customized solutions tailored to various customer needs

- + Unmatched process reliability thanks to over 100 years of experience with can seamers
- + Best support even with the most complex seaming challenges

- + Global network of branches with a 24-hour hotline
- + Local Ferrum technician on-site in no time to provide support

- + Drastic reduction in downtime
- + Competent experts from your region provide timely support

# FERRUM PACKAGING LTD.

## GLOBAL SUPPORT, WHEREVER YOU ARE



SCAN TO FIND YOUR  
NEAREST FERRUM  
SUBSIDIARY OR SALES &  
SERVICE LOCATION



LEARN MORE ABOUT  
FERRUM CAN SEAMERS



GET IN CONTACT WITH OUR  
CAN SEAMER EXPERTS



STAY UP TO DATE  
FOLLOW FERRUM PACKAGING ON  
**LinkedIn**

Ferrum Packaging Ltd. | Industriestrasse 11 | 5503 Schafisheim | Switzerland  
Tel. +41 62 889 13 11 | [packaging@ferrum.net](mailto:packaging@ferrum.net) | [ferrum.net](http://ferrum.net)