

CANNING TECHNOLOGY

F408, F410, F412 CAN SEAMERS



Groundbreaking – modular – flexible

The F408, F410 and F412 can seamers feature flexible, modular manufacturing processes that translate into tailor made and cost-efficient solutions for the food and can manufacturing industries.

The machines can be configured for 8, 10 and 12 seaming stations and speed ranges from 200 to 1'200 cans/minute (mid to high-range capacities).

Concept / Design

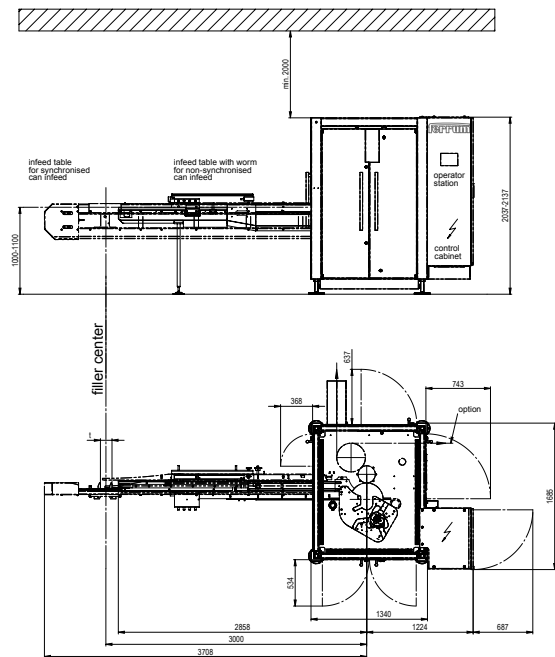
- + Modular assembly and compact design
- + Separate drives for seaming spindles from the actual machine
- + Sophisticated sanitation system
- + Automatic and loss-free oil lubrication system
- + Motorized height adjustment with digital display
- + Seaming roll Easy Rider lifetime lubricated
- + Stainless steel machine enclosure with built-in control cabinet
- + The standard operator panel is integrated directly into the control cabinet
- + Entire seaming area in stainless steel
- + Large service doors and wide access openings

Options

- + Electronic synchronization of filler and seamer utilizing servo motors
- + Undercover steam injection
- + Extended lid feed magazine
- + WIP (Wash-In-Place) cleaning system with spray nozzles
- + Flushing device
- + Straight line infeed table for a synchronized operation
- + Infeed table for can bodies for can manufacturing application
- + Disengageable seaming cam 2nd OP
- + Disengageable and quick-adjusting seaming cam for 2nd OP
- + Plunger type topper device for chain pitch 152,4 [6.00] and 161,9 mm [6.37] (F408)
- + Timed star wheel before infeed worm
- + Operator panel free-standing
- + Swiveling control desk

Benefits for the customer

- + Increased accuracy for lightweight can and end applications
- + Simple operation and cleaning
- + Minimal maintenance requirements
- + Maximum safety environment for machine operators
- + Completely self-contained oil lubrication system eliminates the need for machine greasing
- + Increased residual machine value through the use of corrosion-free materials
- + Reduced spare parts inventory due to our use of standardized components
- + Can discharge right-angled
- + Non-stop 24-h operation



Technical data

Model		F408	F410	F412
No. of seaming stations		8	10	12
Capacity	cans/min	200 - 800	250 - 1'000	300 - 1'200
Motor	kW	4.0 / 11	4.0 / 11	4.0 / 11
	[HP]	[5.5 / 15]	[5.5 / 15]	[5.5 / 15]
Can diameter	mm	50 - 99 (106)	50 - 99	50 - 84
	[Imp]	[200 - 401 (404)]	[200 - 401]	[200 - 307]
Can height (standard)	mm	50 - 190	50 - 190	50 - 190
	[Imp]	[200 - 707]	[200 - 707]	[200 - 707]
Can height (special)	mm	28 - 170	28 - 170	28 - 170
	[Imp]	[102 - 611]	[102 - 611]	[102 - 611]
	mm	100 - 250	100 - 250	100 - 250
	[Imp]	[315 - 913]	[315 - 913]	[315 - 913]
Chain pitch «t»	mm	152.4 / 161.9	133.4 / 123.8	114.3 / 104.7
	[inch]	[6.0 / 6.37]	[5.25 / 4.87]	[4.5 / 4.13]
Weight approx.	kg (netto)	4'100	4'300	4'500
	[lbs (netto)]	[9'000]	[9'500]	[10'000]

Technical changes are reserved.
03.23 / EN / KLS / B / © Ferrum Packaging Ltd