

ferrum

**MODULAR CONVERSIONS
FOR TAILOR-MADE SOLUTIONS**



MODULAR CONVERSIONS

STAY ON TRACK, STAY ON TOP

Markets, customer needs and regulations are evolving, and so it makes sense to modernize your seamer with our modular conversions.



MEET NEW REQUIREMENTS

Old equipment often needs upgrades to meet increasing hygienic, safety and workplace related regulations. Our proven solutions help numerous customers all over the world.



MINIMIZE DOWNTIME

Our modular conversions support your processes. The tailor-made solutions are known for their high quality, which ensures less downtime and allows you to use resources for other tasks.



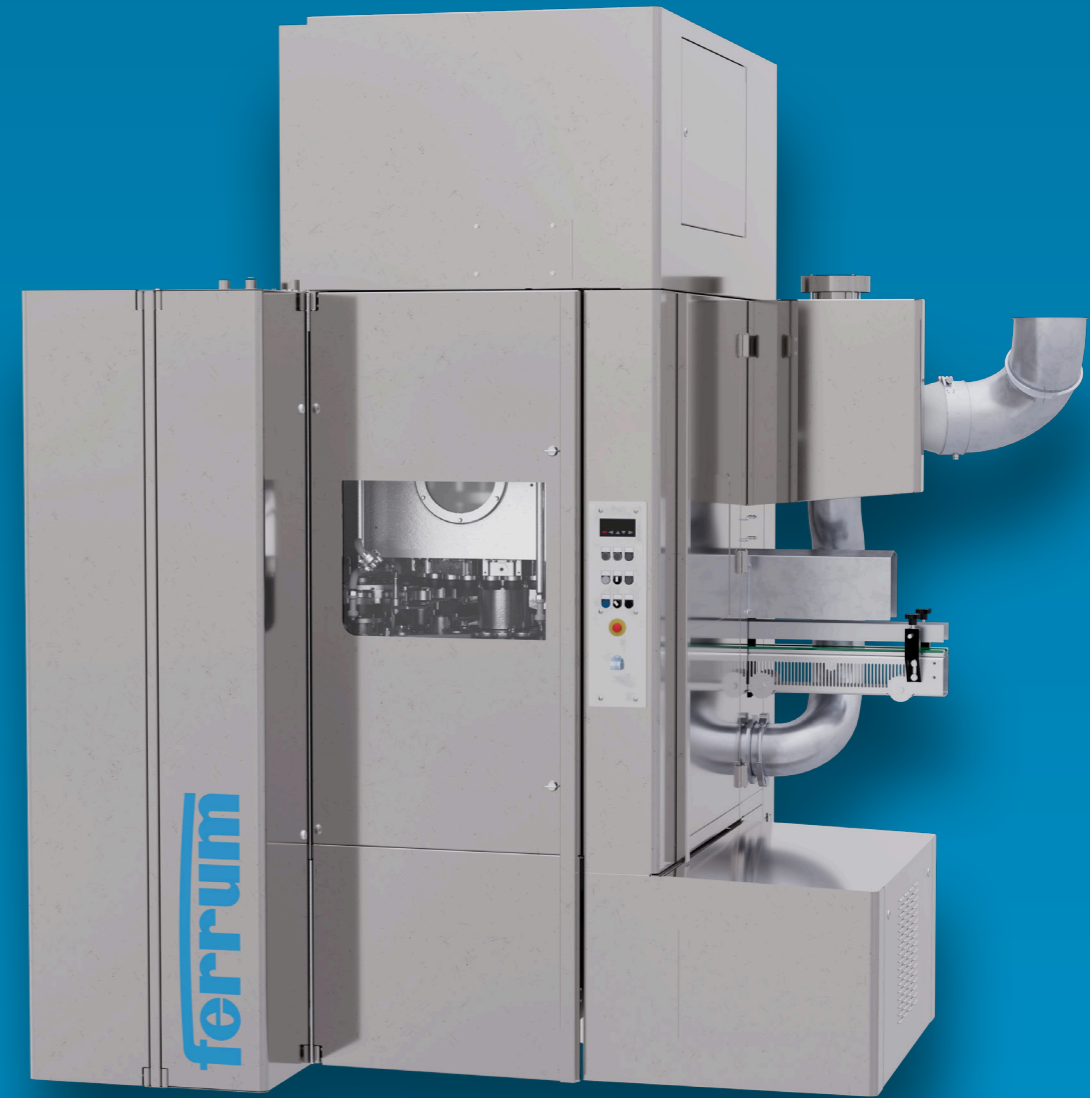
IMPROVE PERFORMANCE

The performance of products decreases over time and new equipment is more efficient. Increase your efficiency by modernizing your seamer with the latest innovations and technologies instead of simply replacing parts.



SUPPORT SUSTAINABILITY

Sustainability has never been as important as it is today. Upgrade your seamer with our modular, resource-saving conversions to protect the environment.



MODULAR CONVERSIONS EXACTLY FOR YOUR NEEDS

AUTOMATIC SEAMING CAM

Increase workplace safety by eliminating manual changes on the roof.

Page 7

SEAMER TOP COVER

Prevent external contamination from the top with a cover according to your needs – even extra high to match with your filler.

Page 13

STAINLESS STEEL UPPER PART

Increase hygiene with a completely stainless product room.

Page 8

CO₂ EXHAUST UNIT

Increase workplace safety and meet current CO₂ regulations.

Page 11

ferruLoop

Procure an additional set of interchangeable assemblies and save up to 3 days during overhaul.

Page 6

CAN INFEEED / DISCHARGE CONTROL

Track every can for maximum process safety.

Page 10

NEW FORMAT PARTS

You innovate with new cans and lids – we provide optimal support for your processes, all the way through to efficient commissioning.

Page 16

HD TOOLING

Upgrade your tooling to the next hygiene level while improving ergonomics.

Page 9

LIGHT WEIGHT CAN KIT

The kit supports the latest trends towards light weight cans and sustainability of the beverage can industry.

Page 12

TOOLING TROLLEY

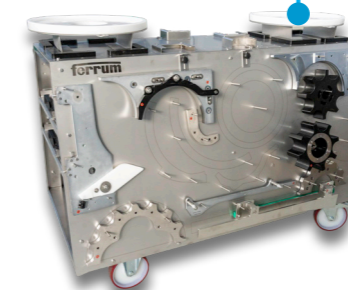
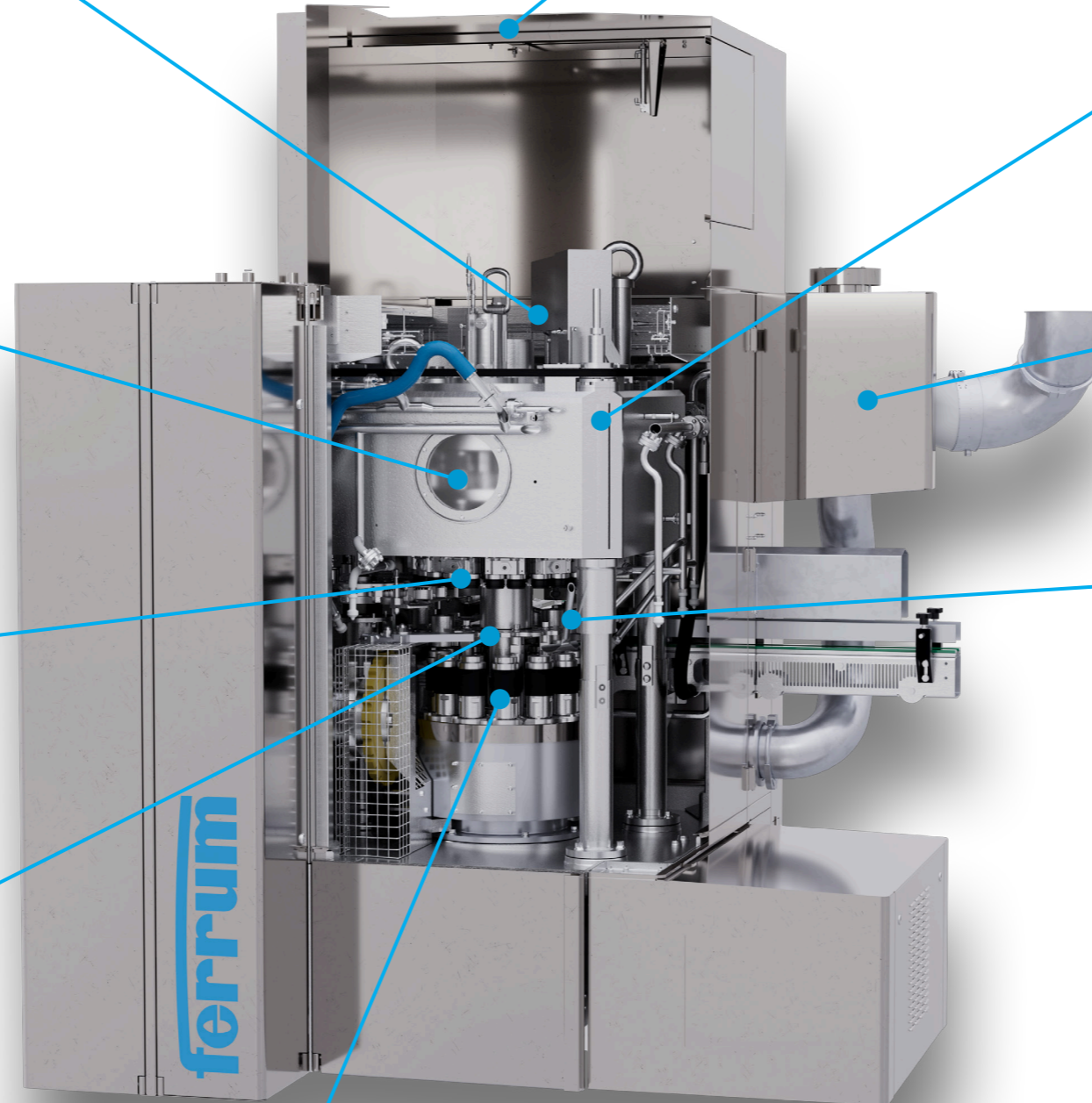
Simplify and standardize your format change process and improve organisation.

Page 14

LIFTING TROLLEY

Improve handling and safety for the format change over.

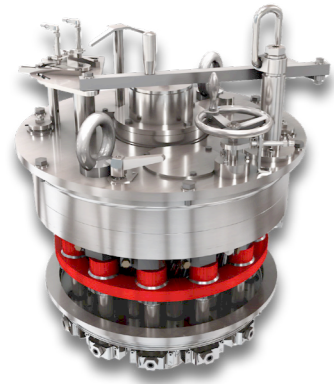
Page 15



ferruLoop

SAFE AND SIMPLE

Reduce downtime during an overhaul with ferruLoop. ferruLoop stands for the exchange of complete pre-assembled units during overhaul. One additional set of interchangeable rotor and lifting stations is procured. With the ferruLoop solution you can produce more and thus earn more money.



REDUCE DOWNTIME

- + Saves up to 3 days during the annual overhaul of ferruBasic seamers
- + More purposeful deployment of your resources during the annual overhaul



MINIMIZE RISKS

- + Reduces downtime in case of an unlikely machine breakdown and prevents massive production losses
- + Overhaul of ferruLoop by a Ferrum service technician after production start up enables production monitoring



SAVE COSTS

- + A rotor can be used for more than one seamer of the same type
- + Lifting stations are even compatible between the two machine types F12 and F18



INCREASE SAFETY

- + Increased operator safety, as all seamer settings are performed via touch panel and thus from the ground
- + 2nd OP can be automatically disengaged for seam control of the 1st OP



OPTIMIZE PRODUCTION

- + Increased accuracy due to automatic, continuous adjustment
- + Reduced changeover times for different materials and thicknesses (less than 1 minute)



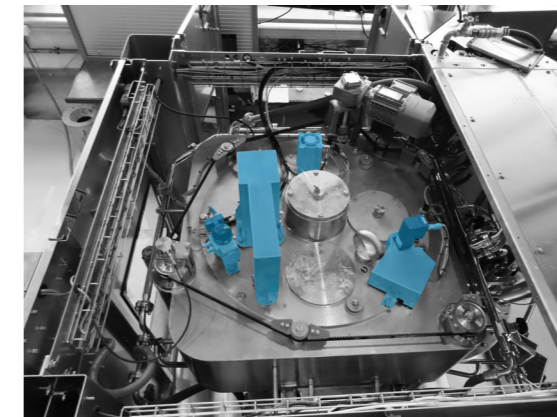
PREVENT ERRORS

- + 10 memory positions simplify operation and reduce potential errors
- + Optimizations are directly visualized and saved

AUTOMATIC SEAMING CAM

WORKPLACE SAFETY IN FOCUS

Instead of using the safety ladder to perform manual changes on the roof, the seaming cam can be upgraded to an automatic version to set fine adjustments. All manual tasks are no longer necessary and are carried out automatically by motor.



Can Seamer	Compatible
F18	✓
F12	✓
F9	✗
F08	✗
F06	✗
F05	✗



INTERESTED?

We are happy to provide you with further information and support you with your current needs.

Can Seamer	Compatible
F18	✓
F12	✓
F9	✗
F08	✗
F06	✗
F05	✗



INTERESTED?

We are happy to provide you with further information and support you with your current needs.

STAINLESS STEEL UPPER PART FOR A COMPLETELY STAINLESS PRODUCT ROOM

The upper part is available in a stainless steel version as an upgrade. The conversion replaces the installed upper part, eliminating material pairings between cast iron and stainless steel. All attached parts are developed according to the current hygiene standards, whereby the product room only consists of stainless steel after this conversion and thus can be cleaned optimally.



INCREASE HYGIENE

- + Completely stainless product area (FDA conformity)
- + Hygienic design improves drainage of liquids



OPTIMIZE PRODUCTION

- + Optimal material pairing prevents corrosion
- + Convert your machine during the annual overhaul to save time and money



EXTEND LIFETIME

- + Upgrade your seamer to the current standard of new machines (F12 / F18)
- + Upgrading important parts of the seamer results in extended lifetime

Can Seamer	Compatible
F18	✓
F12	✓
F9	✓
F08	✓
F06	✓
F05	✓

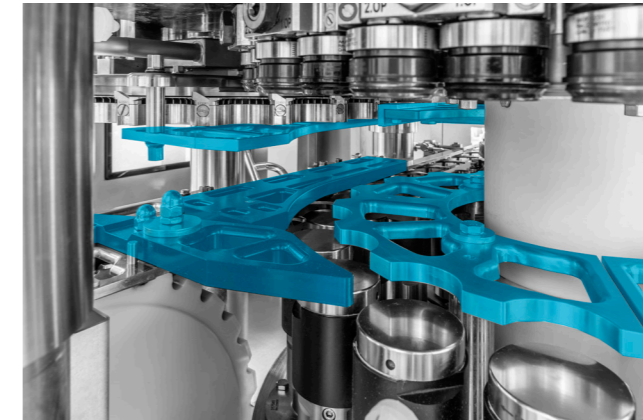


INTERESTED?

We are happy to provide you with further information and support you with your current needs.

HD TOOLING UPGRADE TOOLING TO THE NEXT HYGIENE LEVEL

An upgrade towards a hygienic design (HD) of the tooling involves cut-outs to reduce flat surfaces and optimally adapted radii, both facilitating the drainage of liquids. Plan the conversion with the annual overhaul to further save resources and time.



IMPROVE HYGIENE

- + Reduced recontamination due to more effective cleaning and reduced surfaces (hygienic design)
- + Completely stainless product area (FDA conformity)



IMPROVE ERGONOMICS

- + Operators benefit from weight savings on format parts during changeovers



CLEAN EFFICIENTLY

- + Time savings and reduced water consumption due to more efficient cleaning and strongly reduced spray shadow formation

Can Seamer	Compatible
F18	✓
F12	✓
F9	X
F08	✓
F06	✓
F05	X



INTERESTED?

We are happy to provide you with further information and support you with your current needs.

CAN INFEED / DISCHARGE CONTROL

TRACK EVERY CAN FOR MAXIMUM PROCESS SAFETY

The mechanical triggering of a jack ensures a production stop in case of a can crash. The infeed / discharge control counts incoming and outgoing cans. The sensor at the infeed table is already installed within the standard version. Additionally, a sensor is installed to count cans at the seamer exit. If the numbers of cans does not add up, the seamer will stop. This upgrade ensures 100% control, even after the jack.



PROCESS SAFETY

- + Detects all missing cans in the seamer



OPTIMIZE PRODUCTION

- + Minimize potential can jam and thus production delay
- + Minimize potential product and material losses



OPTIMIZE WORKING CONDITIONS

- + Efficient extraction of the CO₂ in the product room prevents exceeding the occupational exposure limit (OEL) due to CO₂



OPTIMAL MAINTENANCE

- + Integrated cleaning nozzle
- + Quick release ring ensures simple disassembly of the pipe for maintenance activities



PROVEN SOLUTION

- + The exhaust unit is developed to highest standards, complies with regulations and helps numerous customers all over the world

Can Seamer	Compatible
F18	✓
F12	✓
F9	✓
F08	✓
F06	✓
F05	✓



INTERESTED?

We are happy to provide you with further information and support you with your current needs.

Can Seamer	Compatible
F18	✓
F12	✓
F9	✓
F08	✓
F06	✓
F05	✓



INTERESTED?

We are happy to provide you with further information and support you with your current needs.

CO₂ EXHAUST UNIT

MEET CURRENT SAFETY STANDARDS

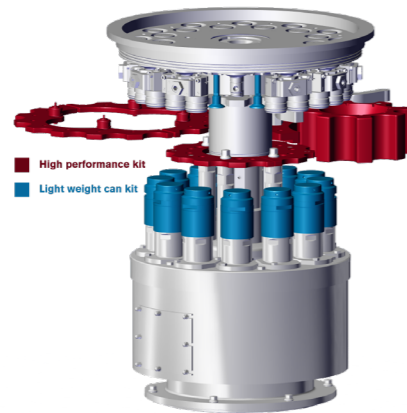
For undercover gassing, CO₂ is used to accomplish longevity of products. The CO₂ Exhaust Unit increases occupational safety by extracting the CO₂ from the product room.



LWC KIT (LIGHT WEIGHT CAN)

FERRUM HELPS TO SUPPORT SUSTAINABILITY

As the trend toward lighter cans intensifies, so does the challenge of seaming. Thin-walled cans are more sustainable as less material is used but also more sensitive to horizontal forces. As the new generation of cans with an axial resistance force of >675N penetrates the market, we introduce two solutions: The light weight can kit (LWC kit), reduces dynamic forces with the help of new lifting stations and the umbrella knockout pads. For can heights above 122 mm, the kit high performance is additionally introduced to improve the guidance of the can in sensitive areas with broader guides.



ENHANCED WARRANTY

- + Ferrum guarantees best seaming quality with lighter cans



OPTIMIZE PERFORMANCE

- + Machine speed remains unchanged with lighter cans



SUPPORT SUSTAINABILITY

- + With the change to lighter cans, less material is used per can and therefore supports sustainability



IMPROVE HYGIENE

- + Protect your machine from top-down contamination
- + The opening enables faster drying after cleaning and thus reduces recontamination



OPTIMIZE ERGONOMICS

- + The proven solution considers optimal space for maintenance activities
- + The solution with an automatic opening allows settings being performed efficiently via touch panel



OPTIMIZE SAFETY

- + The upgrade to automatic operation from the ground increases operator safety since all manual tasks are no longer necessary

Can Seamer	Compatible
F18	✓
F12	✓
F9	✓
F08	✓
F06	✓
F05	✓



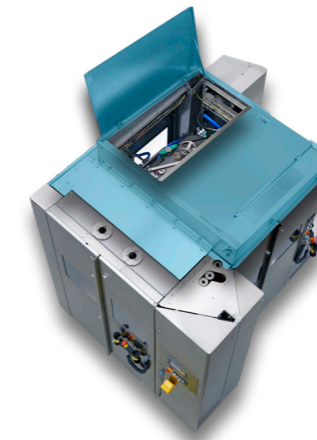
INTERESTED?

We are happy to provide you with further information and support you with your current needs.

SEAMER TOP COVER

CHOOSE YOUR COVER ACCORDING TO YOUR NEEDS

We offer a range of seamer top covers as upgrades. Most importantly, the cover prevents external contamination on entering the product room. Our covers are available with manual or automatic opening.



IMPROVE HYGIENE

- + Protect your machine from top-down contamination
- + The opening enables faster drying after cleaning and thus reduces recontamination



OPTIMIZE ERGONOMICS

- + The proven solution considers optimal space for maintenance activities
- + The solution with an automatic opening allows settings being performed efficiently via touch panel



OPTIMIZE SAFETY

- + The upgrade to automatic operation from the ground increases operator safety since all manual tasks are no longer necessary

Can Seamer	Compatible
F18	✓
F12	✓
F9	✓
F08	✓
F06	✓
F05	✓



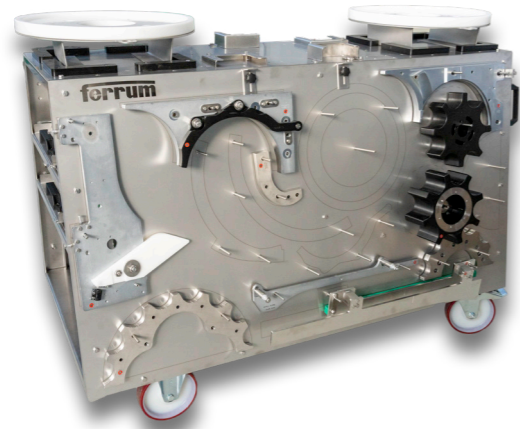
INTERESTED?

We are happy to provide you with further information and support you with your current needs.

TOOLING TROLLEY

SIMPLIFY AND STANDARDIZE YOUR PROCESSES

With our tooling trolley the organization of the format change process is quick and easy. One tooling trolley offers space for two complete formats and is also available for tooling in hygienic design.



SUPPORT STANDARDIZATION

- + Pictogram for positioning instruction ensures easy handling
- + Good overview of all format parts



OPTIMIZE HANDLING

- + Good accessibility of all format parts



REDUCE FOOTPRINT

- + Compact design results in optimal use of space



OPTIMIZE ERGONOMICS

- + Simple & quick operation of the stroke via hand crank
- + Efficient handling due to centering on the tooling trolley



BOOST EFFICIENCY

- + The lifting trolley can be handled by one operator



ENABLE FURTHER BENEFITS

- + Efficient handling in combination with the tooling trolley, which is accessible from all sides

Can Seamer	Compatible
F18	✓
F12	✓
F9	✓
F08	✓
F06	✓
F05	✓



INTERESTED?

We are happy to provide you with further information and support you with your current needs.

LIFTING TROLLEY

CONVENIENT FORMAT CHANGE WITHIN REGULATIONS

The lifting trolley replaces the manual assembly assistance and can be interpreted as an upgrade. Format changeover has been optimized in handling and safety. It is compatible with the tooling trolley, so that the format changeover can be done quick and safely.



Can Seamer	Compatible
F18	✓
F12	✓
F9	✓
F08	✗
F06	✗
F05	✗

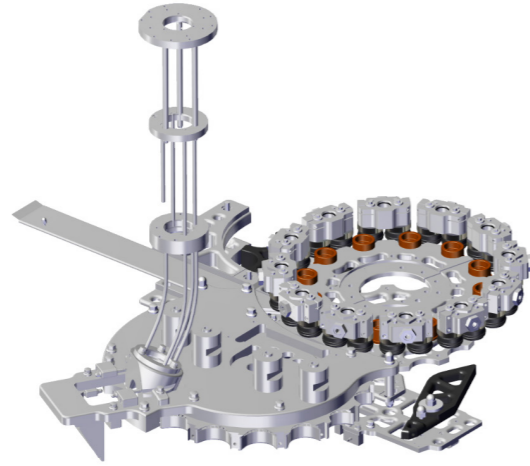


INTERESTED?

We are happy to provide you with further information and support you with your current needs.

ADDITIONAL FORMAT PARTS INNOVATE WITHOUT RISK

We are always ready to support your requests for new can and lid format parts. Our standardized procedures optimally support your processes. We offer additional spare parts to ensure a safe ramp up.



RELY ON FUNCTIONALITY

- + We track the latest developments in the can and lid industry and guarantee the functionality of new formats



EMPOWER INNOVATION

- + We support your ideas with our exceptional knowhow in seaming



REDUCE RISK

- + Start-up kits are available as an option including essential spare parts to ensure uninterrupted production in the event of unforeseen incidents

Can Seamer	Compatible
F18	✓
F12	✓
F9	✓
F08	✓
F06	✓
F05	✓



INTERESTED?

We are happy to provide you with further information and support you with your current needs.

INDIVIDUAL MODIFICATIONS CONTACT US FOR A TAILOR-MADE OFFER

The catalogue contains our proven conversions. You can further customize your seamer with individual requests. We frequently develop tailor-made solutions with unique quality to meet your needs. We are looking forward to consulting you, and who knows – one of the conversions might appear in this brochure by the next version!



FERRUM PACKAGING LTD.

GLOBAL SUPPORT, WHEREVER YOU ARE



- LOCATIONS
- REPRESENTATIVES
- SERVICE PARTNER

FERRUM PACKAGING LTD.

Industriestrasse 11
5503 Schafisheim
Switzerland
T +41 62 889 13 11
packaging@ferrum.net

FERRUM PACKAGING INC.

880 Bahcall Court
Waukesha, WI 53186
USA
T +1 877 337 7863
canning.sbusa@ferrum.net

FERRUM PACKAGING (KUNSHAN) CO., LTD.

No. 329, Jujin Road
Zhangpu Township
215321 Kunshan City
Jiangsu Province
P.R. China
T +86 512 3662 5104
canning@ferrumchina.com

FERRUM PACKAGING (VIETNAM) CO., LTD.

60A Hoang Van Thu Str. Ward 09,
Phu Nhuan Dist., Ho Chi Minh City,
Vietnam
packaging@ferrum.net

FERRUM PACKAGING (THAILAND) CO., LTD.

591 UBC II Bldg.,
16th Floor, Room 1606
Sukhumvit 33, Sukhumvit Road,
10110 Klongton-Nua, Wattana, Bangkok
Thailand
packaging@ferrum.net

FERRUM PACKAGING (UK) CO., LTD.

Unit 6 Monkspath Business Park
B90 4NY Shirley Solihull
United Kingdom
packaging@ferrum.net

POLYPACK COMÉRCIO E SERVIÇOS LTDA.

Bairro Pinheirinho
Rua Eduardo Ferragut, 35
13280-000 Vinhedo-SP
Brasil
T +55 (19) 3826 4200
fabio@ferrum.com.br

FURTHER INFORMATION



CANNING TECHNOLOGY

We are happy to provide you with further information and support you with your current needs.

► ferrum.net/can-seamer